



D-30409-2011

**Make the golden hour  
your time to shine.**

RESUSCITAIRE®

## In the golden hour, experience can make all the difference.

Because patient management decisions during the critical first hour of a baby's life can directly influence immediate survival and long-term morbidity, you want solutions you can depend on. Drawing from years of experience in neonatal care, Dräger has integrated neonatal thermoregulation and respiratory support into a single, versatile Labor & Delivery device—the Resuscitaire warmer.

### RAPID RESPONSE

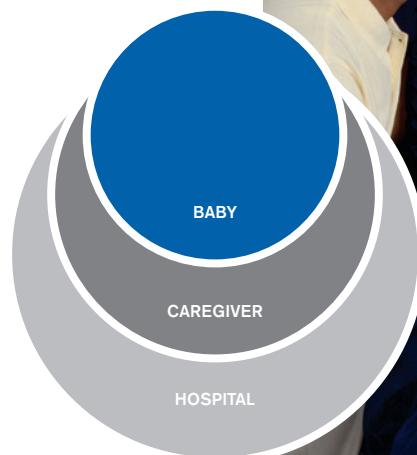
Progressive respiratory support capabilities help you stabilize patient breathing while safeguarding delicate airways.

### CONSTANT COMFORT

Resuscitaire's ability to provide uniform thermoregulation across the baby's mattress and easily adapt to developmental care requirements, has made it a trusted resource in Labor & Delivery departments around the world.

### STEP SAVER

Ease-of-use considerations, patient access and process-driven conveniences enable caregivers to concentrate on their patients rather than their equipment, making Resuscitaire ideal for a wide range of needs in Labor & Delivery and surgical settings.



# Reliable Delivery



D-32423-2011

From routine warming to emergency respiratory intervention, Resuscitaire was meticulously developed to reliably meet a wide range of Labor & Delivery needs. At Dräger, we do not just develop medical devices and solutions, we manufacture them as well. That is why we are highly familiar with all the functions, specifications, and technical details. We can offer you fast, uncomplicated, and reliable service that fits your individual needs. All over the world.

# Rapid Response



Should the newborn have difficulty transitioning to breathing, you can help clear fluids from the lungs and establish a functional residual capacity.



A nasal cannula, a minimally invasive intervention, can serve as a quick, convenient way to prevent hypoxia and respiratory acidosis.

## Proven respiratory support, where and when you need it.

### PROGRESSIVE SUPPORT SAFEGUARDS DELICATE AIRWAYS

When you consider that 80% of Very Low Birth Weight newborns, 60% of Meconium Stained newborns, and 6% of Cesarean Section newborns require some form of respiratory stabilization<sup>1</sup>, it's comforting to know that Resuscitaire puts so many quality options at your fingertips.

Dräger's proven Continuous Positive Airway Pressure (CPAP) and Positive End-Expiratory Pressure (PEEP) capabilities support precise gas delivery so crucial to preventing respiratory complications in neonates. Plus, a choice of delivery devices enables you to provide the minimal amount of support required to achieve respiratory stabilization to further safeguard fragile lungs.

### INTUITIVE DESIGN PROMOTES CONFIDENT CARE

Resuscitaire's easy-to-understand respiratory support interfaces allow you to move efficiently from one solution to the next, as needed. The logical layout, easily accessible controls, and familiar operation facilitate confident respiratory support needed to assure desired ventilation, oxygenation, and skin temperature. In addition, front-facing gauges help you accurately monitor airway pressure, suction, and gas supply to help keep you in control of the process.



Resuscitaire's T-piece enables you to deliver consistent CPAP and PEEP along with a fixed inflating pressure for precise control of the baby's respiratory support. It offers a convenient alternative to bag and mask ventilation and can be used with either a face mask for non-invasive support or an endotracheal tube.



AutoBreath™ redefines advanced respiratory support by automating the process. It automatically delivers the desired levels of FiO<sub>2</sub>, flow, max pressure, rate, and PEEP, freeing up the clinician's hands. In addition, this automated capability can reduce the need for a ventilator in the Labor & Delivery unit, saving both time and money.

<sup>1</sup> Bissinger RL, Ohning BL. Neonatal Resuscitation. eMedicine Specialties>Pediatrics: Cardiac Disease and Critical Care Medicine>Neonatology. Retrieved Sept 16, 2008, from <http://www.emedicine.com/ped/topic2598.htm>.

## Thermoregulation requirements are dynamic; so is our solution.

### SETTING THE STANDARD FOR UNIFORM HEAT DISTRIBUTION

The younger the newborn, the more critical effective thermoregulation becomes. With the Resuscitaire, it all starts with its Silica Quartz element—the most responsive heating element in the industry. The element provides rapid warm up, while its full-length parabolic reflector delivers even heat distribution across the mattress surface to keep the newborn cradled in soothing warmth.

The Automatic Pre-Warm Mode allows long-term, controlled warming of the mattress with no nuisance alarms. The Manual Mode lets you adjust heater output in 10% increments, while the Servo Mode uses a dual thermistor temperature probe and  $\pm 1.0^{\circ}\text{C}$  alarm to ensure precise temperature tolerances. For added reliability, an independent Ambient Temperature Probe automatically adjusts heater output to maintain a safe and stable mattress temperature.

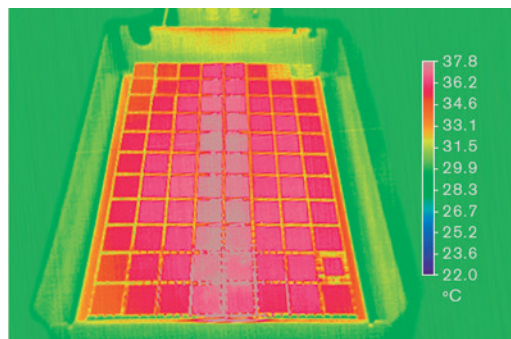
### SUPPORTING THE NEEDS OF THE PATIENT AND THE PROCESS

Dräger understands that the needs of the developmental care process are dynamic. As a result, the Resuscitaire was specifically developed to keep pace with those demands.

For example, the head of the warmer module swivels up to  $90^{\circ}$  from side to side. Whether the baby is on the mattress or nearby in mom's arms, Resuscitaire continues to monitor and thermoregulate the neonate. Should the mattress need to be tilted for Trendelenburg or reverse Trendelenburg positioning, the parabolic reflector continues to deliver uniform heat distribution across the mattress.

The developmental alarm feature even takes into account the adverse effects of noise on the baby. When activated, alarm output starts out quietly and only builds in volume if unattended.

The parabolic reflector helps ensure the most even heat distribution available across the mattress surface, helping you avoid potentially dangerous hotspots and inconsistencies associated with hourglass-type thermal delivery.



# Constant

## Comfort



D-48867/2015



D-49570-2015

A workstation approach with vital signs monitoring, respiratory support, thermoregulation and all accessories to meet your labor and delivery needs.

## Focused on the details, so you can focus on the patient.

From its lightweight, easy-to-maneuver design to convenient ergonomic touches throughout the unit, the Resuscitaire simplifies operation to expedite care and help keep caregivers fresh and productive throughout long shifts.

### EXCEPTIONAL ACCESS FROM EITHER SIDE

Side panels can be easily lowered for access to the baby. The height of the mattress surface can be easily adjusted to the individual caregiver's personal preference using variable height adjustment pedals found on either side of the unit. Dual access X-ray offers users greater flexibility. Plus, a pass-through drawer makes storing accessories and routinely needed items a breeze.

### CONFIGURE TO YOUR DEPARTMENT'S NEEDS

A choice of basic configurations and a variety of accessories lets you custom configure the unit to your needs. Accessories include left or right hand instrument trays, an IV pole, a shelf for related devices, such as SpO<sub>2</sub>, and an easy-to-use scale—complete with one-touch operation.

### EASILY ACCESS SUCTION

The suction compartment is located at the back of the unit to make routine cleaning as quick and easy as possible.

### EFFICIENTLY ADJUST MATTRESS POSITION

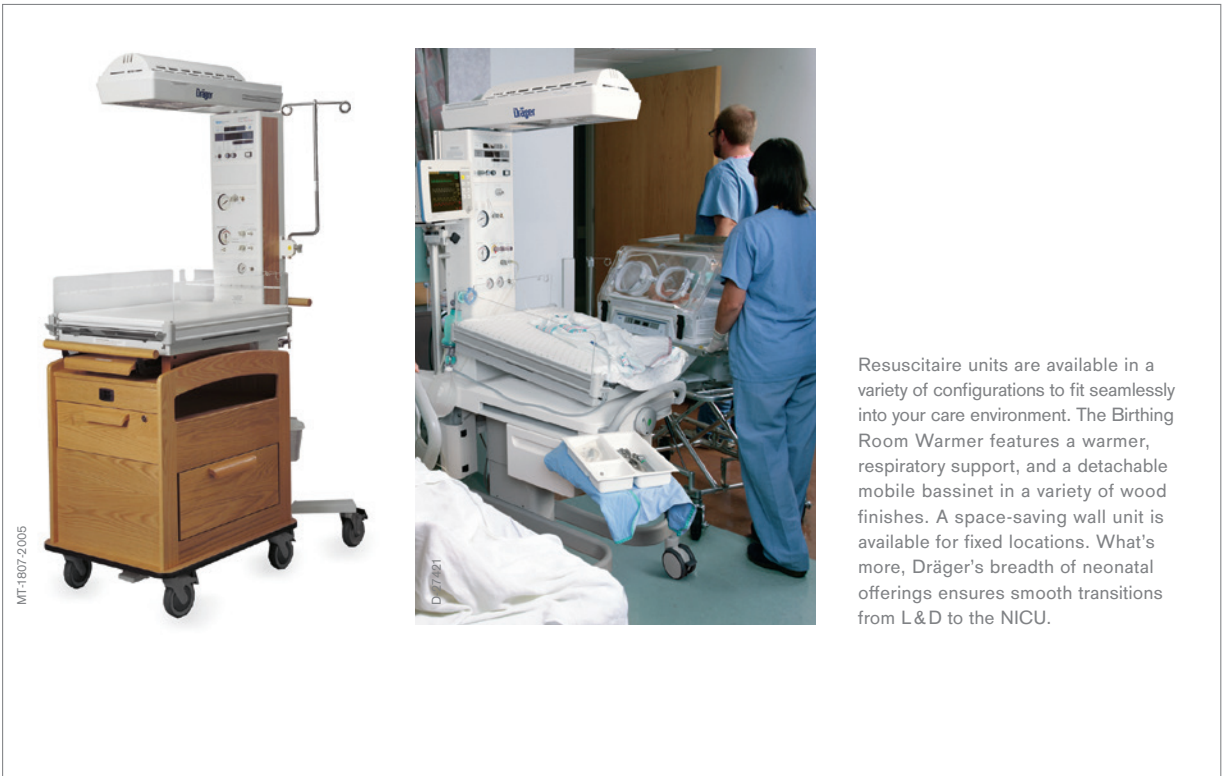
An ergonomic knob at the front of the unit lets you adjust the mattress smoothly, from zero to ten degrees, facilitating Trendelenburg and reverse Trendelenburg positioning.



D-30728-2011



# Step Saver



Resuscitaire units are available in a variety of configurations to fit seamlessly into your care environment. The Birthing Room Warmer features a warmer, respiratory support, and a detachable mobile bassinet in a variety of wood finishes. A space-saving wall unit is available for fixed locations. What's more, Dräger's breadth of neonatal offerings ensures smooth transitions from L&D to the NICU.

## TECHNICAL SPECIFICATIONS DRÄGER RESUSCITAIRE WARMER

Physical Attributes (without options/accessories)	VHA Model	
Height	72 in (183 cm)	71–79 in (180–201 cm)
Width	26.5 in (68 cm)	26.5 in (68 cm)
Depth	44 in (112 cm)	44 in (112 cm)
Weight (without options /accessories)	220–280 lbs (100–127 kg)	220–280 lbs (100–127 kg)
<b>Mattress</b>		
Height from floor	39.4 in (100 cm)	35–43 in (90–109 cm)
Width	21.0 in (53.3 cm)	21.0 in (53.3 cm)
Length	26.0 in (66.0 cm)	26.0 in (66.0 cm)
Thickness	1.0 in (2.54 cm)	1.0 in (2.54 cm)
Maximum capacity	15 lbs (4.54 kg)	15 lbs (4.54 kg)
<b>Maximum Power Requirements</b>		
Model 120V	120 V, 50–60Hz, 750 W	
220/240V	220–240 V, 50–60Hz, 750 W	
<b>LED Examination light</b>		
Illumination	>0.11 lumens/cm <sup>2</sup> (100 ft. Candles)	
<b>Controller heating alarms</b>		
Check patient	System alerts for 5 minutes in Manual Mode every 30 seconds after 10 minutes	
Baby temperature	±1° C from Set Point	
High temperature	Skin Temp. 39.0 ±0.2 °C	
Probe	Short or open circuit / No probe	
System fail	Indicates System Fail	
Power fail	AC Power Interruption	
<b>Alarm silence/reset intervals</b>		
Check patient	Resets clock for 10 minutes manual mode	
Baby temperature	10 minutes	
High temperature	2 minutes	
Procedural silence	Presilences baby temp alarm for 5 minutes	
<b>Set temperature/heater output</b>		
Set temp range	34–38 °C (>37.0° override)	
Heater output	0–100%, 10% increments	
Skin temp display	18–43 °C	
Accuracy	±0.2 °C (31 to 37° C)	
<b>Resuscitation module</b>		
Wall supply pressure	40–75 psi (275–517 kPa)	
Cylinder pressure	2,900 psi max (19 994 kPa)	
<b>Patient gas supply</b>		
Flow control range	0–15 LPM	
Airway pressure limit		
Adjustable	0–50 cm H <sub>2</sub> O (0–4.9 kPa)	
Internal preset limit	60 cm H <sub>2</sub> O (5.9 kPa)	

**Auxiliary flow circuit**

Auxiliary flow range	0–15 LPM
Fixed internal	160 cm H <sub>2</sub> O (15.7 kPa)

**Suction circuit**

Adjustable	0–150 mmHg (0–20 kPa)
Disposable collection container	40 ml

**AutoBreath™ infant resuscitator**

Adjustable breath rate range	18–60 BPM ( $\pm 10\%$ of setting)
I:E ratio	Fixed at 1:2 Nominal
Pressure (PEEP)	0–18 H <sub>2</sub> O (0–1.77 kPa)
Gas bleed	5 LPM Max
Precision blender (optional)	21–100% $\pm 3\%$ O <sub>2</sub>

**Alerts**

Manual mode	System alerts for 5 minutes every 30 seconds after 10 minutes
Apgar timer	Alerts at 1, 5 and 10 minutes
Timer	Visual timer up to 1 hour

**Instrument tray (Resuscitaire only)**

Length	13.0 in (33.0 cm)
Width	9.0 in (22.8 cm)
Capacity	5 lbs (2.2 kg)

**X-ray cassette tray**

Pocket width	14.5 in (36.8 cm)
Pocket length	11.0 in (27.9 cm)
Thickness	0.75 in (1.9 cm)

**IV pole**

Maximum load	5 lbs (2.2 kg)
--------------	----------------

**Monitor shelf**

Length	12.0 in (31.75 cm)
Width	14.0 in (40.64 cm)
Maximum load	10 lbs (4.5 kg)

## TECHNICAL SPECIFICATIONS DRÄGER RESUSCITAIRE® WARMER—WALL MOUNT

### Maximum Power Requirements

Model	120 V	120 V, 50–60 Hz, 750 W
	220/240 V	220–240 V, 50–60 Hz, 750 W

### Examination light

Illumination	> 100 Ft. Candles (0.11 Lumens/cm <sup>2</sup> )
--------------	--

### Specifications

Length	29.8 in (75.7 cm)
Width	10 in (25.4 cm)
Height	6 in (15.2 cm)
Weight	<35 lbs (15.92 kg)

### Controller heating alarms

Check patient	System alerts for 5 minutes in Manual Mode every 30 seconds after 10 minutes
Baby temp	±1 °C from Set Point
High temp	Skin Temp 39.0 ±0.2 °C
Probe	Short or open circuit/No probe
System fail	Indicates System Fail
Power fail AC Power Interruption	AC Power Interruption
Alarm	Silence/Reset Intervals (manual mode)
Check patient	Resets clock for 10 minutes
Baby temp	10 minutes
High temp	2 minutes
Procedural silence	Silences audible Baby Temp alarm for 5 minutes

### Set temperature/heater output

Set temp range	34–38 °C (37.0 °C override)
Heater output	0–100%, 10% increments
Skin temp display	18–43 °C
Accuracy	±0.2 °C (31 to 37 °C)

Not all products, features, or services are for sale in all countries.

Mentioned Trademarks are only registered in certain countries and not necessarily in the country in which this material is released. Go to [www.draeger.com/trademarks](http://www.draeger.com/trademarks) to find the current status.

#### CORPORATE HEADQUARTERS

Drägerwerk AG & Co. KGaA  
Moislinger Allee 53–55  
23558 Lübeck, Germany

[www.draeger.com](http://www.draeger.com)

#### Manufacturer:

Dräger Medical Systems, Inc.  
3135 Quarry Road  
Telford, PA 18969-1042, USA

Locate your Regional Sales  
Representative at:  
[www.draeger.com/contact](http://www.draeger.com/contact)



#### USA

Dräger, Inc.  
3135 Quarry Road  
Telford, PA 18969-1042, USA  
Tel +1 800 4DRAGER  
(+1 800 437 2437)  
Fax +1 215 723 5935  
[info.usa@draeger.com](mailto:info.usa@draeger.com)

#### CANADA

Dräger Medical Canada Inc.  
2425 Skymark Avenue, Unit 1  
Mississauga, Ontario, L4W 4Y6  
Tel +1 905 212-6600  
Toll-free +1 866 343 2273  
Fax +1 905 212-6601  
[Canada.support@draeger.com](mailto:Canada.support@draeger.com)